

45.10 M / 147'96"



MAIN CHARACTERISTICS

Length 45.10 M / 147'96"

Beam 8.80 M / 28'87"

POA

* Approximate price conversion

🏠 Address:

3 Rue de la Loge L-1945 Luxembourg

📞 Contact

Thomas Peltier • P: +352.27.40.99.90 • M: +352.621.326.323

✉ E-mail:

t.peltier@seastemia.com

DESCRIPTION

wallyace500concept Fast planing hulls had always been a feature of Wally's power yachts – until we designed the wallyace line. Drawing on the naval architecture expertise of the celebrated Laurent Giles, the wallyace500 is our first yacht to have a steel hull and aluminium superstructure for operations at displacement speeds. Maxing out at 16 knots, the yacht has an ocean-straddling range of 5,000nm at 12 knots. In other respects, the yacht is immediately identifiable as a Wally. It embodies the brand's famous inside-outside lifestyle to perfection, with the sleek, minimal lines that are typical of all our boats. Glass features heavily in the exterior design, from bulwarks to the full-height windows which seem to support the upper and sun decks. Overhangs taper far back over the deck below.

SPECIFICATIONS

DIMENSIONS

Length

45.10 M / 147'96"

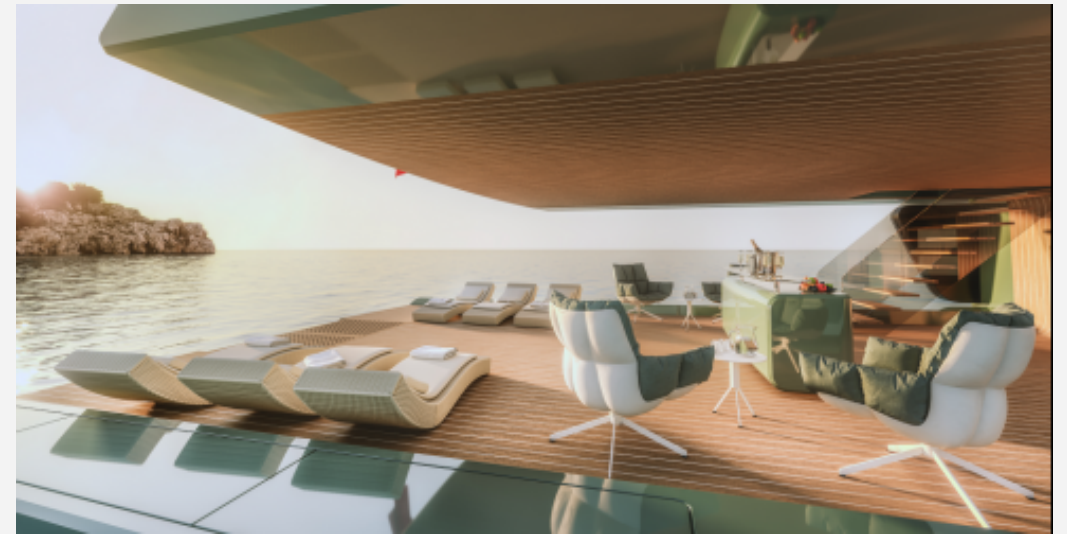
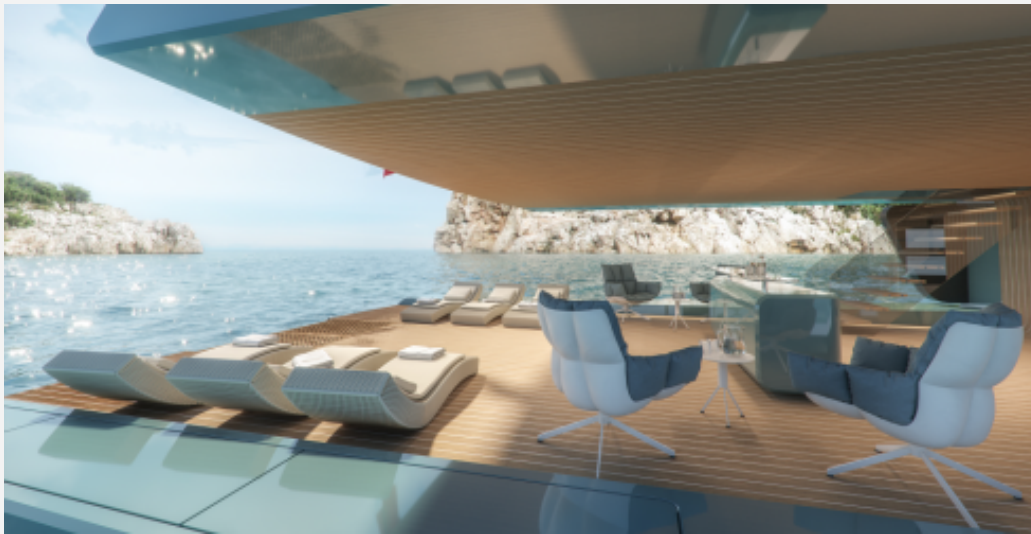
Beam

8.80 M / 28'87"

45.10 M / 147'96"



45.10 M / 147'96"



45.10 M / 147'96"



45.10 M / 147'96"

