



MAIN CHARACTERISTICS

Builder	Feadship
Designer	Kees van den Hoek & Feadship
Built Year	1969
Refit Year	2012
Hull Material	Steel Hull
Length	25.81 M / 84'68"
Beam	5.87 M / 19'26"
Draft	2.13 M / 6'99"
Displacement	100.00 tons
Lying	South of France
Registry	England

2,990,000 EUR 3,400,336 USD*

* Approximate price conversion

🏠 Address:

3 Rue de la Loge L-1945 Luxembourg

📞 Contact

Thomas Peltier • P: +352.27.40.99.90 • M: +352.621.326.323

✉ E-mail:

t.peltier@seastemia.com

DESCRIPTION

Bright high quality example of the mid last century 1950-60's Yachting excellence, this Canoe Stern Yacht is a flagship by itself of what was yachting golden age in the French riviera. Built in 1969 and fitted with 2 original Gardener Engines totally rehailed in 2012 together with the rest of this Yacht for an extensive refit at the Feadship yard in 2012, to grant this unit its a true Pedigree but adding what's needed of modern technology to do not compromise comfort and safety onboard. With a capacity of eight guest accomodated in four state rooms, including a full beam Master ensuite with its own full head bathroom including a large bathtub and a separate shower, a the most central and comforable lower deck area, another full beam VIP ensuite at the center aft of the yacht with its own bathroom and shower, as well as two central portboard and starboard doubles cabins which can be convereted in two twins sharing a central bathroom. Surounded by a quiet and contemporary soft grey and walnut timeless interior, all guests will enjoy the truly unique cruising atmosphere at the fantastic economical speed of 10knots for a consumption of not more than 35 liters an hour, just as it was meant to be...

SPECIFICATIONS

BOAT DETAILS

Built Year	1969	Refit Year	2012
Lying	South of France	Registry	England

CERTIFICATION

Compliance	commercial registration
-------------------	-------------------------

BUILDER / DESIGNER

Builder	Feadship	Designer	Kees van den Hoek & Feadship
Naval Architect	Feadship	Hull Type	Displacement
Hull Material	Steel Hull		

DIMENSIONS

Length	25.81 M / 84'68"	Beam	5.87 M / 19'26"
Draft	2.13 M / 6'99"	Displacement	100.00 tons

MACHINERY

Engine Maker	Gardner	Drive	Shaft
Number of Engines	2	Propulsion Mode	Diesel
Engine(s) power	245.00 hp	Engine(s) model	Eight cylinders flat
Engine 1 hours	3,900.00 H.	Engine 2 hours	4,400.00 H.
Gearboxes/Transmission	Manual Gearbox	Main Generator Maker	Caterpillar C 2.2
Main Generator Power	27.00 KW	Main Generator Hours	6,380.00 H.
Stabilizer Maker	Wesmar stabilizer system	Water Maker	Idromar
Water Maker Flow	124.00 l/H / 32.74 gal/H	AC type	Marix rpm regulated air-condition system

PERFORMANCES

Cruising Speed	10.00 knots	Max Speed	12.00 knots
Range	2,100.00 NM	Cruising Speed for Range	10.00 knots

TANKAGES

Fuel	8,500.00 liters / 2,244.00 US gals	Water	3,000.00 liters / 792.00 US gals
-------------	------------------------------------	--------------	----------------------------------



Address:

3 Rue de la Loge L-1945 Luxembourg



Contact

Thomas Peltier • P: +352.27.40.99.90 • M: +352.621.326.323



E-mail:

t.peltier@seastemia.com

TANKAGES

Holding 660.00 liters / 174.24 US gals

ACCOMODATIONS

Sleeps	8 guests	Berths	2 simple, 3 double
Bathroom	3	Crew	4
Crew Berths	4		

COMMUNICATION & NAVIGATION EQUIPMENT

- Complete "Yacht control" NMEA 2000 system
- PC based system with back up computer in case of failure
- 48 mile KODEN radar
- Raymarine VHF
- Raymarine "smart" pilot with wireless remote control and constant running hydraulic pump
- Depht sounder
- Weather station
- Cmap based chart plotter
- NMEA software switches
- Twin daylight "touch" screens
- NMEA 2000 and IP based (CAT 5 cables) networks throughout the ship
- 2x handheld VHF's with Bluetooth headsets
- AIS class A

- Central tv digital antenna system
- Underwater bow and stern camera, aft deck and forward-looking mast cameras
- Underwater LED lights at stern, side and bow
- Iridium satphone
- HP wireless printer/scanner
- On board wifi system
- Smart phone/tablet/PC/MAC wireless connection to allow remote monitoring and switching of most of the systems.
- Retractable dashboard
- EPIRB

Mechanical Systems:

- 2 x hot water boilers of 110 liters each
- In tank fitted Grundig rpm regulated freshwater pump
- 4 Hp 380 volts waste water pump
- Magnetic driven impeller centrifugal pumps for firefighting, bilge and water maker supply
- SEPAR fuel filters
- Fuel transfer pump with SEPAR filtering system
- Constant running 24 volts steering pump
- Main engine driven stabilizer hydraulic pump
- Holland Warmte diesel burner heater

Electrical Systems:

- 12/24V DC
- 220/380 V AC 50 Hz
- 2x 24V engine starter gel batteries
- 40x 200 amps (total 8000 amps)
- 24V service gel batteries
- 3x 8Kw DC/AC Victron converters (total 24 Kw)

RECREATIONAL EQUIPMENT

Storage:

Below the crew quarters is a large storage area. This space contains a large washing machine, heat pump silent drying machine, 3 separate 50 ltrs freezers, an additional 110 ltrs fridge and lots of storage space for food, drinks etc.

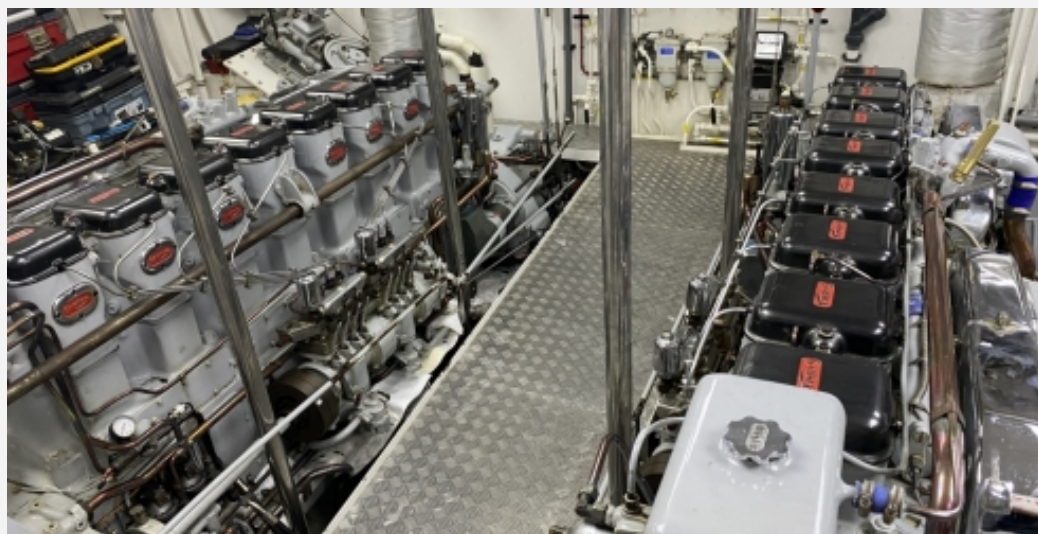
Tenders:

"Williams" jet tender and a "Yamaha" waverunner stowed on the foredeck. The jet tender allows to enter shallow waters and beaching due to the lack of a propeller and is therefore safe for swimmers too. The foredeck was designed to ensure that these tenders use the same center mounted deck crane, allowing (in most circumstances) to be launched while moored in port.





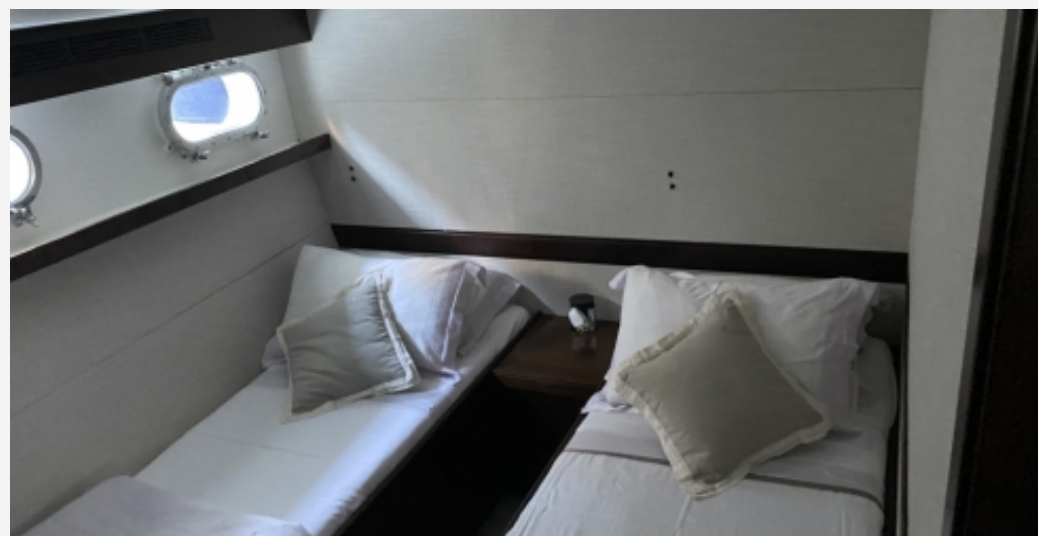
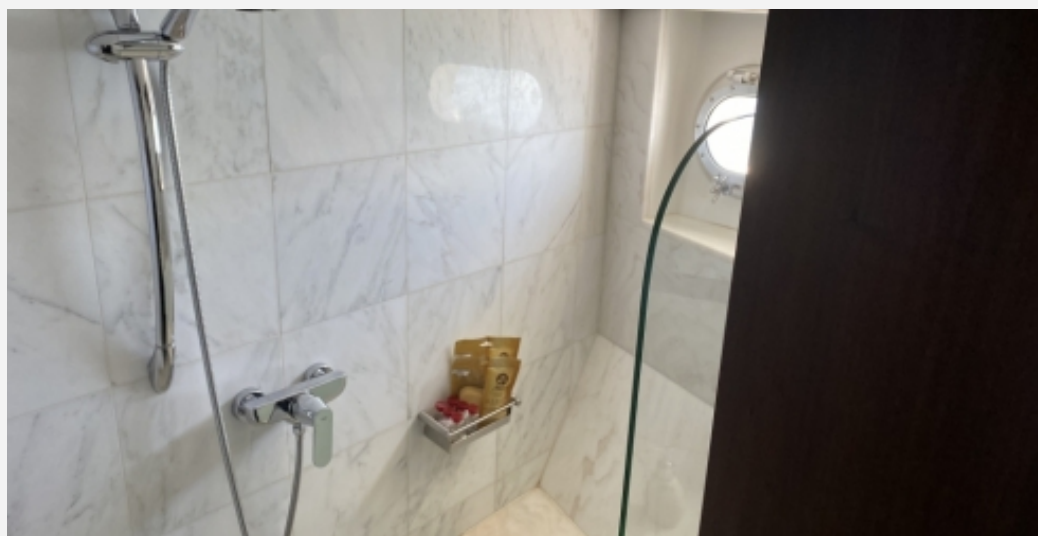
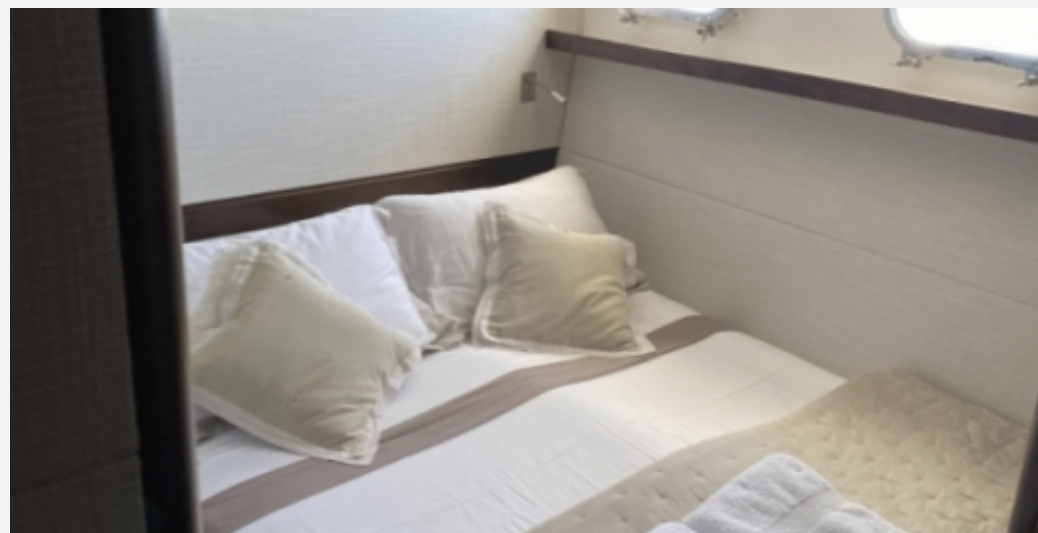


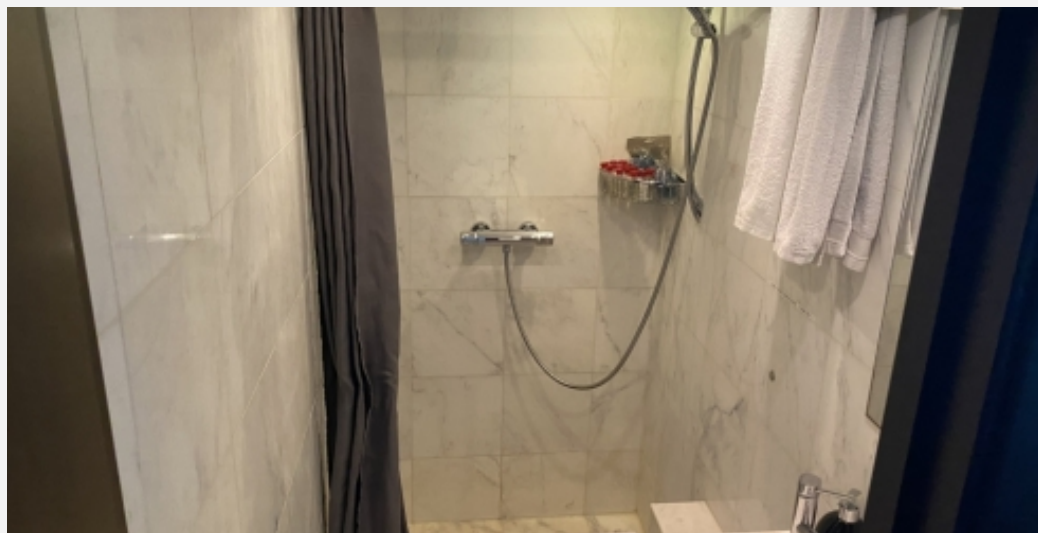


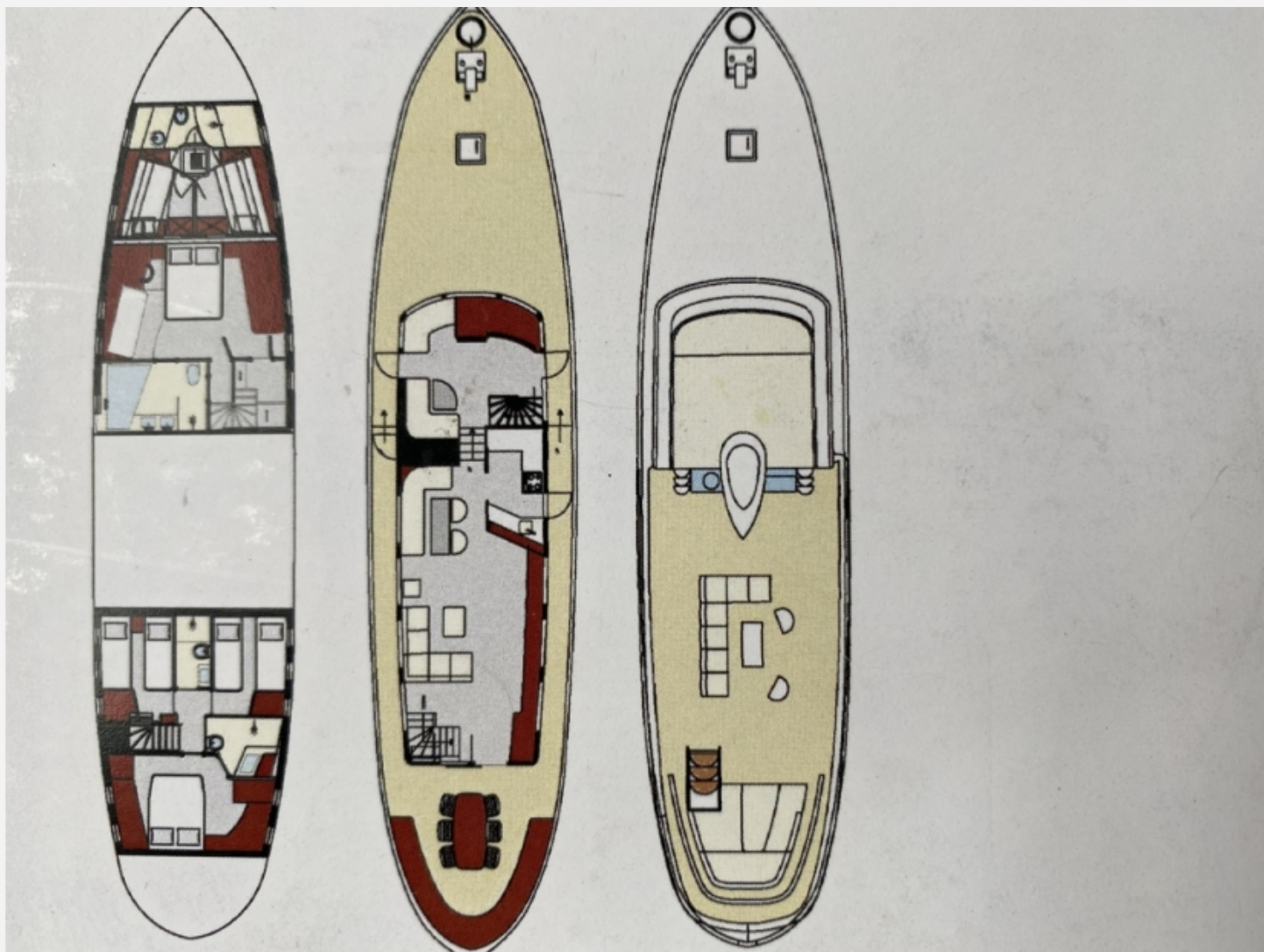












Address:

3 Rue de la Loge L-1945 Luxembourg



Contact

Thomas Peltier • P: +352.27.40.99.90 • M: +352.621.326.323



E-mail:

t.peltier@seastemia.com