

26.30 M / 86'29"



MAIN CHARACTERISTICS

Builder	Dreamline Yachts
Designer	T4 Design Enrico Gobbi
Built Year	2015
Hull Material	GRP
Length	26.30 M / 86'29"
Beam	6.65 M / 21'82"
Draft	1.90 M / 6'23"
Displacement	75.00 tons
Lying	Italy
Registry	England
Tax Status	excl. VAT

4,100,000 EUR 4,267,497 USD*

* Approximate price conversion

🏠 Address:

3 Rue de la Loge L-1945 Luxembourg

📞 Contact

Thomas Peltier • P: +352.27.40.99.90 • M: +352.621.326.323

✉ E-mail:

t.peltier@seastemia.com

DESCRIPTION

Welcome back in the top range of premium yachting segment with this 26 meters Dreamline launched in 2015! Multiple award winning yacht and model thanks to its innovative design and premium construction quality, the Dreamline 26 is not only a clever owner choice for those who desire the best but it offers even more in terms of volumes, safety and features. Second owner since new, this 4 cabins layout unit with a panoramic Master ensuite on the main deck, and a second full gauge "Master/VIP" cabin in the lower deck and two additional twins. All cabins are equipped with wardrobe and bathrooms to accommodate comfortably 8 guests on a long cruise, in the nicest light luxury atmosphere of T4 Design. Thanks to its semi-planing hull from Arabito, the yacht at 12 knots consumption is no more than 70 liters in total with a range increased to 1400NM, while when needed she can reach a top speed of 23 knots. Raised Pilot House type, full on her spec with two V12 MAN 1400Hp engines of 880 hours each, two 27KW generators, 0 speed and navigation fin stabilizers, garage for a 3.85mtr Williams Jet tender, a very large flybridge with jacuzzi and Paola Lenti loose furniture, and hydraulic aft swimming platform with jetski and hydraulic swimming ladder at the aft, a crew quarter for 5 crew, water maker, etc, etc... A good ready to sail option now offered on the market at 4.5 Mio Euros VAT EXCL.

SPECIFICATIONS

BOAT DETAILS

Main Category	Motor yacht	Boat Status	Brokerage
Built Year	2015	Lying	Italy
Registry	England	Tax Status	excl. VAT

CERTIFICATION

Category	A	Compliance	CE Certification Rina pleasure
-----------------	---	-------------------	--------------------------------

BUILDER / DESIGNER

Builder	Dreamline Yachts	Designer	T4 Design Enrico Gobbi
Naval Architect	Arabito Naval architect	Model	DL26
Hull Material	GRP		

DIMENSIONS

Length	26.30 M / 86'29"	Beam	6.65 M / 21'82"
---------------	------------------	-------------	-----------------

DIMENSIONS

Draft	1.90 M / 6'23"	Displacement	75.00 tons
Ballast Weight	75.00 tons		

MACHINERY

Engine Maker	MAN	Drive	V-Drive
Number of Engines	2	Propulsion Mode	Diesel
Engine(s) power	1,400.00 hp	Engine(s) model	MAN V12-1400CR
Engine 1 hours	885.00 H.	Engine 2 hours	885.00 H.
Main Generator Maker	Kohler	Main Generator Power	28.00 KW
Main Generator Hours	2,300.00 H.	Auxiliary Generator Maker	KOHLER
Auxiliary Generator Power	28.00 KW	Auxiliary Generator Hours	2,200.00 H.
Stabilizer Type	Electrical	Stabilizer Maker	Mitsubishi zero speed and navigation fins
Water Maker	aquamatic	Water Maker Flow	250.00 l/H / 66.00 gal/H
AC type	Tropical		

PERFORMANCES

Cruising Speed	17.00 knots	Max Speed	23.00 knots
Range	1,400.00 NM	Cruising Speed for Range	12.00 knots

TANKAGES

Fuel	8,000.00 liters / 2,112.00 US gals	Water	1,400.00 liters / 369.60 US gals
Grey Water	710.00 liters / 187.44 US gals	Black Water	500.00 liters / 132.00 US gals

ACCOMODATIONS

Sleeps	8 guests	Berths	4 simple, 2 double
Bathroom	4	Crew	5
Crew Berths	5		

LAYOUT / INTERIOR

 HARDTOP on Fly

 Stereo on Fly

 Barbecue with Frigo on Fly

Pantry equipment

 Ceran Cooking Plate

 Microwave / oven

 Frigo / Freezer

 Dishwasher

 Icemaker

 Frigo-bar in Salon

 Frigo-bar in Owner Cabin

 Electr. Blinds or curtains for Salon and Owner Cabin

 Ceramic WC automatic flush

 Anti Noise Protection under Carpet for Living Area

 Safe

 Searching Light

 Teak in Cockpit, Walkaround, Platform

 Parquet floor in Salon, Dining, Pilothouse and Pantry according the shipyard´s allowances

 Camera Surveillance (Engine room – cockpit – side corridors – fly)

 N° 20 Cushions

 Rain-Cover for all Sunbeds, Chairs and Windscreen

 Fix installed Cockpittable with 5 Wicker Chairs

 Crewcabins 2 cabins 2 bathrooms (4 beds) with Frigo, Cooking plate, Washing Machine/Dryer, N° 2 Radio/CD/DVD, N° 1 TV LEDscreen 24"

 Side Doors in Pantry – Lobby

 Hydraulic Gangway lighted

 N° 2 TV LED screen 46 "in Salon and 40" with folding system in Owner Cabin

TV LED screen 32" in VIP and Guest Cabins - N° 1 in each cabin

 Universal Receiver for SAT-TV – Salon – Owner Cabin – VIP Cabins – Guest Cabins and Crew Cabin

 HIFI System Home Entertainment Denon or similar for Salon – VIP and Guest Cabins

 HIFI System Home Entertainment BOSE lifestyle or similar for Owner Cabin

 Battery System for service – engine – and start circuit (maintenance free gel battery)

 Hydr. Tender Garage with tender lifting system

 N° 2 Inflatable Life-Rafts 2 x 8 Persons

 Safety Equipment

COMMUNICATION & NAVIGATION EQUIPMENT

N° 2 Generator 2 x 27 kW 230 V 50 Hz

 Air-condition

 Control display 15" (touchscreen) for all ship systems N°1 pilothouse

 Control display (touchscreen) for engines N°2 pilothouse N°2 Fly

 Autopilot Simrad or similar Pilothouse and Fly

 N° 3 Raymarine GS 165 or similar (for Radar / GPS Plotter /Depthfinder / Video) N° 2 Pilothouse and N° 1 Fly

 N° 2 Joystick follow up Pilothouse and Fly

 N° 2 VHF Pilothouse and Fly

 Portable VHF with Recharge Cockpit

 Interphone

 N° 4 Raymarine i70 (Log/echosounder/electr. compass/windindicator) or similar Pilothouse

 N° 2 Raymarine i70 (Log/echosounder/electr. compass/windindicator) or similar Fly

 N° 1 hydr. adjustable Pilot Seat in Pilothouse

 Holding Tank

 Automatic Antifire System

 N° 2 Double Racor Fuel Filters

 Hydraulic Bathing Ladder

 Electron. Gas-Gearshift Mannesmann or similar

 Anchor-Winch

 Anchor Washing

 N° 2 Winches in Cockpit

 Bowthruster 30 hp hydraulic





26.30 M / 86'29"



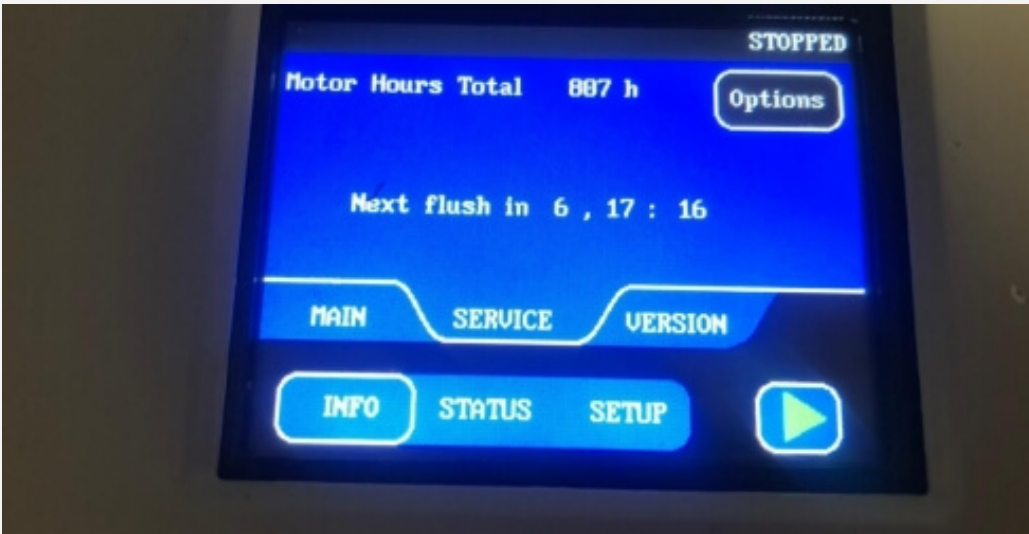


26.30 M / 86'29"





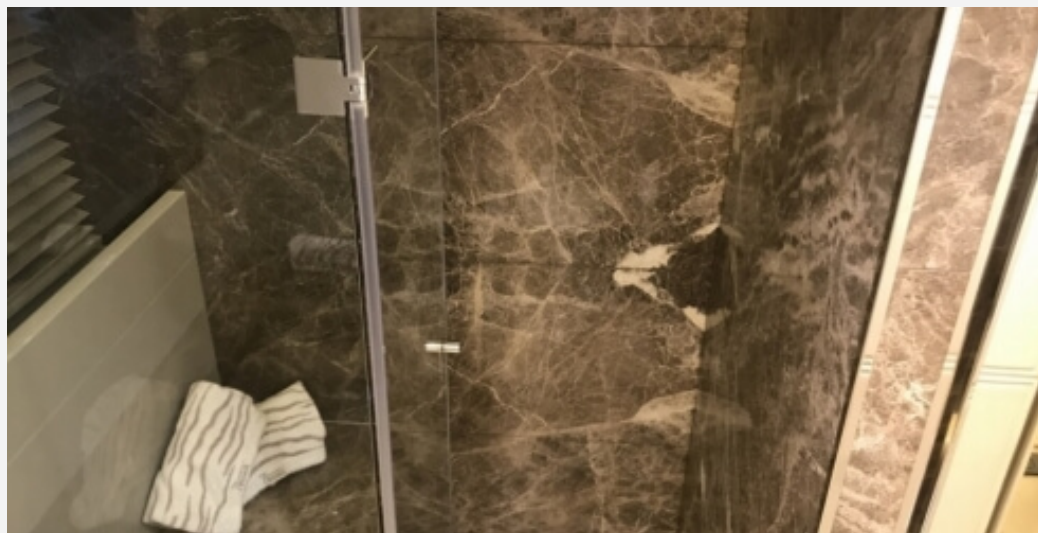
26.30 M / 86'29"





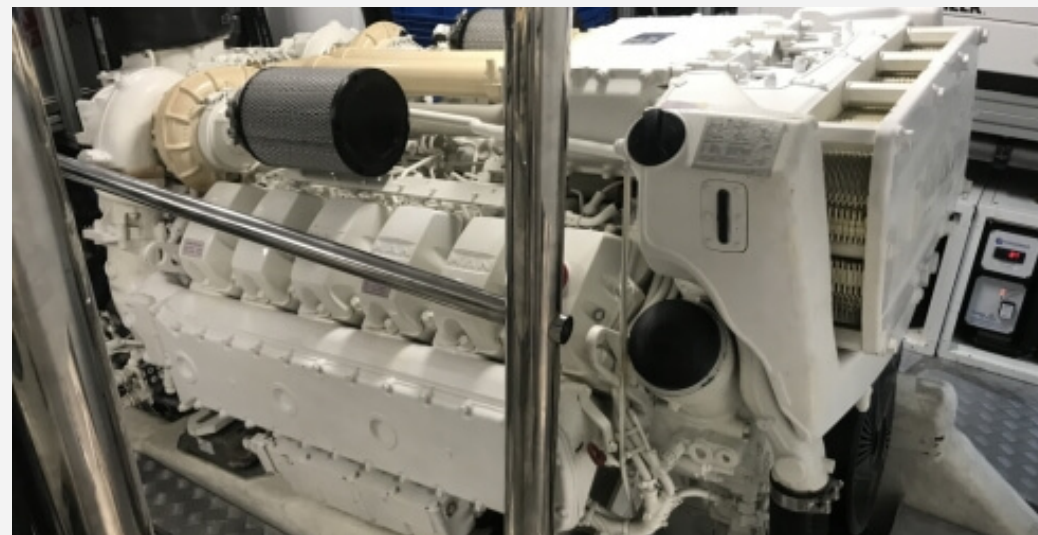
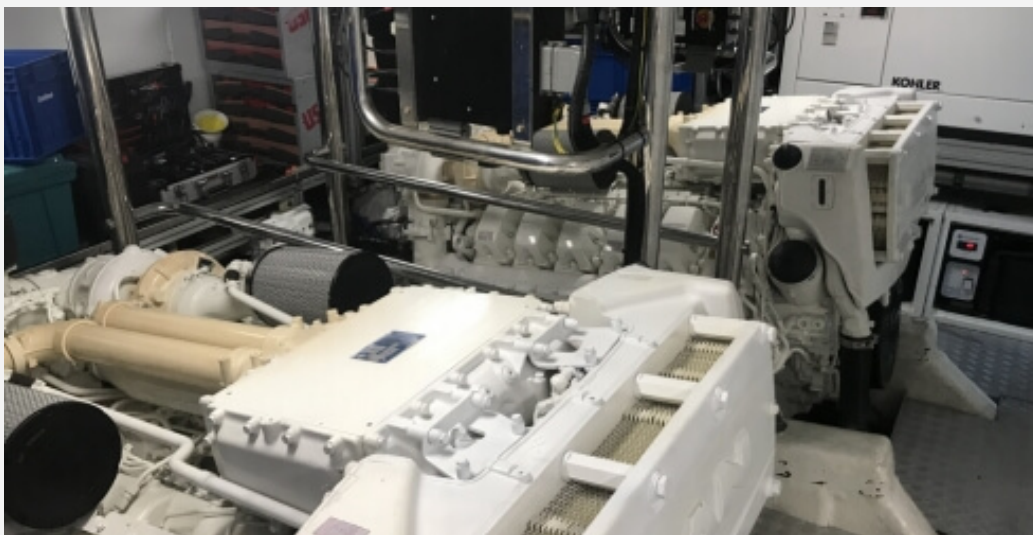






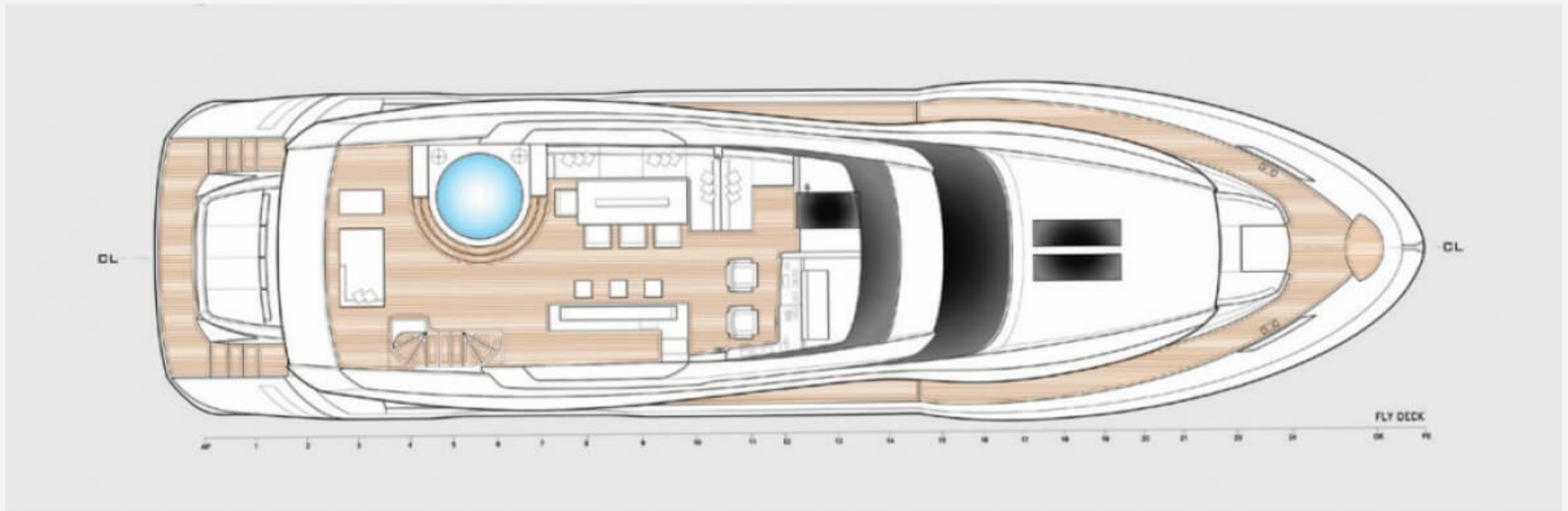


26.30 M / 86'29"



26.30 M / 86'29"





26.30 M / 86'29"

